



BOARD OF COMMISSIONERS

1 S. Main St., 9th Floor
Mount Clemens, Michigan 48043
586-469-5125 FAX 586-469-5993
macombcountymi.gov/boardofcommissioners

EDUCATION AND TRAINING COMMITTEE

WEDNESDAY, AUGUST 11, 2010

AGENDA

1. Call to Order
2. Pledge of Allegiance
3. Adoption of Agenda
4. Approval of Minutes dated 6-16 and 7-14-10 (previously distributed)
5. Public Participation (five minutes maximum per speaker, or longer at the discretion of the Chairperson related only to issues contained on the agenda)
6. Michigan Works Executive Director's Report/John Bierbusse
7. MSU Extension District Coordinator's Report/Marie Ruemenapp
 - a) Extension Redesign Update
 - b) General Program Update-GLEP Scholarships
8. New Business
9. Public Participation (five minutes maximum per speaker or longer at the discretion of the Chairperson)
10. Adjournment

MEMBERS: D. Flynn-Chair, Moceri-Vice-Chair, Mijac, Doherty, Rengert, Crouchman, Camphous-Peterson, Bruley, Sprys and Gielegem (ex-officio)

MACOMB COUNTY BOARD OF COMMISSIONERS

Andrey Duzyj - District 1
Marvin E. Sauger - District 2
Phillip A. DiMana - District 3
Tom Mocen - District 4
Susan L. Doherty - District 5

Sue Rocca - District 7
David Flynn - District 8
Robert Mijac - District 9
Ken Lampar - District 10
Ed Szczepanski - District 11

James L. Carabelli - District 12
Don Brown - District 13
Brian Brdak - District 14
Keith Rengert - District 15
Carey Torrice - District 16

Paul Gielegem
District 19
Chairman

Kathy Tocco
District 20
Vice Chair

Ed Bruley - District 17
Dana Camphous-Peterson - District 18
Irene M. Kepler - District 21
Frank Accavitti Jr. - District 22

Joan Flynn
District 6
Sergeant-At-Arms

William A. Crouchman - District 23
Michael A. Boyle - District 24
Kathy D. Voshurg - District 25
Jeffery S. Sprys - District 26



*A private-public partnership
administered locally by the Macomb/St. Clair Workforce Development Board*

TO: Education & Training Committee
FROM: John H. Bierbusse
RE: Meeting of August 11, 2010

On July 21, 2010 the U.S. Senate passed the extension to the unemployment program and the next day the President signed the legislation. This bill provides the following:

- Extension of Emergency Unemployment Compensation (EUC) program – The Emergency Unemployment Compensation (EUC) program phased-out at the end of May 2010. This program provides (depending on a State’s unemployment rate) up to fifty-three (53) weeks of extended benefits. The bill extends the EUC program through November 2010 and is retroactive. Michigan qualifies for the full 53 weeks.
- Extension of Extended Benefits (EB) program – 100% Federal funding for the Extended Benefits (EB) program phased-out at the end of May 2010. This program provides up to an additional 13 to 20 weeks of benefits in certain States (i.e., 13 weeks for States at or above 6.5% unemployment and another 7 weeks for States at or above 8% unemployment). The bill would extend full funding for the EB program through November 2010. Again, Michigan qualifies for the full 20 week extension.

*distributed
8-11-10*

ADMINISTRATIVE OFFICE

VerKullen Building
21885 Dunham Road, Suite 11
Clinton Township, MI 48036-1030
(586) 469-5220
FAX (586) 469-7488

CUSTOMER CENTERS

75 North River Road
Mt. Clemens, MI 48043
(586) 469-7702
FAX (586) 469-5062

15950 12 Mile Road
Roseville, MI 48066
(586) 447-9200
FAX (586) 447-9236

43630 Hayes Road
Clinton Township, MI 48038
(586) 263-1501
FAX (586) 266-9517

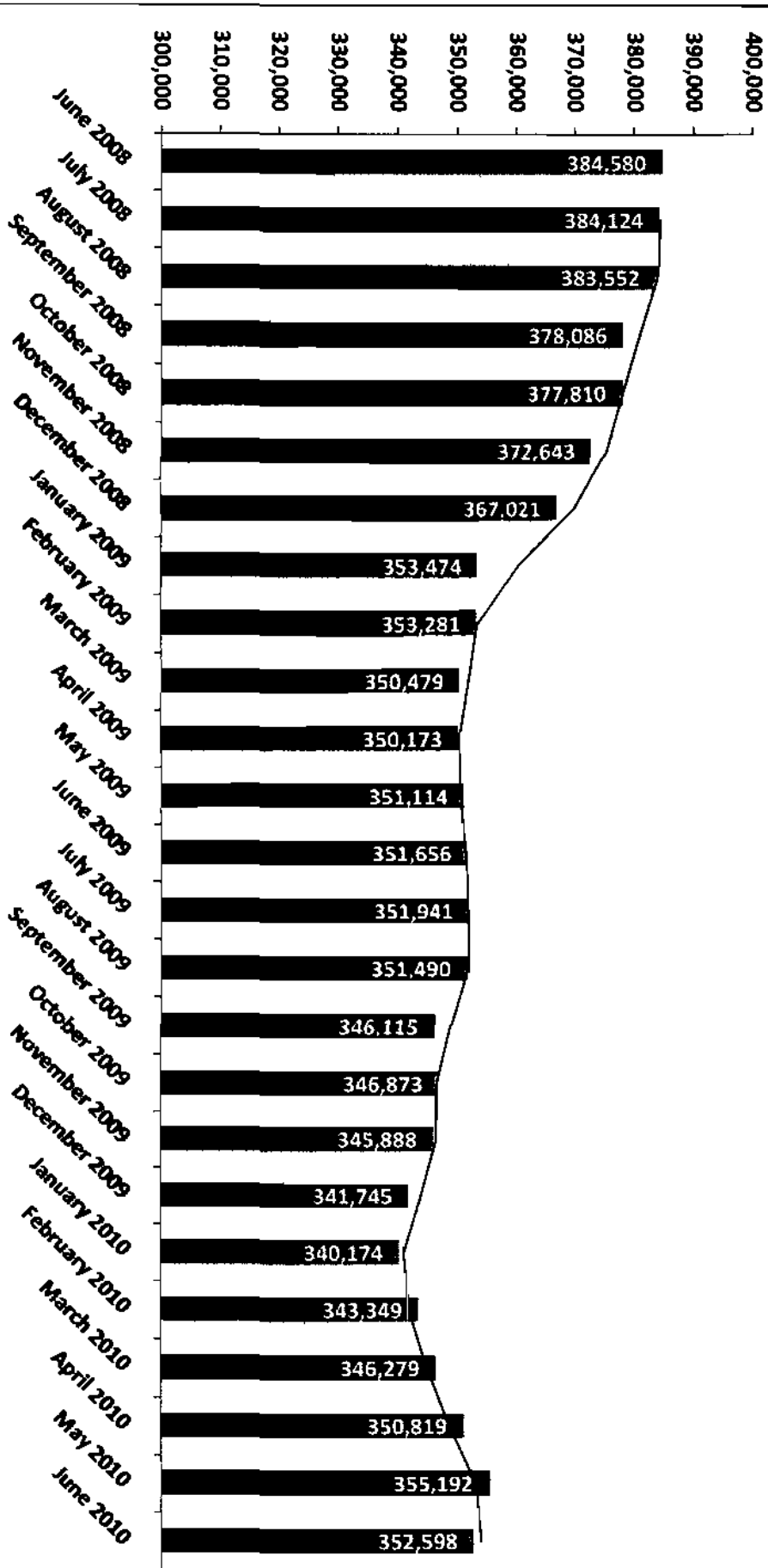
100 McMorran Boulevard
6th Floor
Port Huron, MI 48060
(810) 966-3300
FAX (810) 966-3337

27850 Van Dyke
Warren, MI 48093
(586) 574-2170
FAX (586) 576-0576

Employment Services Registrations

DATE	2008	2009	2010
1 st Week of Year	720	2,705	2,654
2 nd Week	877	3,488	2,125
3 rd Week	1,050	2,931	1,700
4 th Week	812	2,500	1,572
5 th Week	755	2,504	1,527
6 th Week	781	2,245	1,272
7 th Week	802	2,338	1,322
8 th Week	698	1,958	1,571
9 th Week	710	2,203	1,671
10 th Week	832	2,230	1,496
11 th Week	900	2,015	1,325
12 th Week	842	1,954	1,219
13 th Week	854	1,940	1,158
14 th Week	898	2,067	1,366
15 th Week	959	2,146	1,475
16 th Week	922	2,261	1,439
17 th Week	841	2,441	1,276
18 th Week	850	2,289	1,184
19 th Week	852	2,661	1,190
20 th Week	800	2,459	1,107
21 st Week	730	2,263	933
22 nd Week	538	1,988	1,174
23 rd Week	678	2,409	1,163
24 th Week	647	2,696	1,155
25 th Week	718	2,712	1,337
26 th Week	710	2,089	1,379
27 th Week	748	2,071	985
28 th Week	811	2,522	1,019
29 th Week	819	2,259	1,022
30 th Week	738	2,062	1,095
31 st Week	914	1,871	1,163
TOTAL	24,806	72,277	42,074

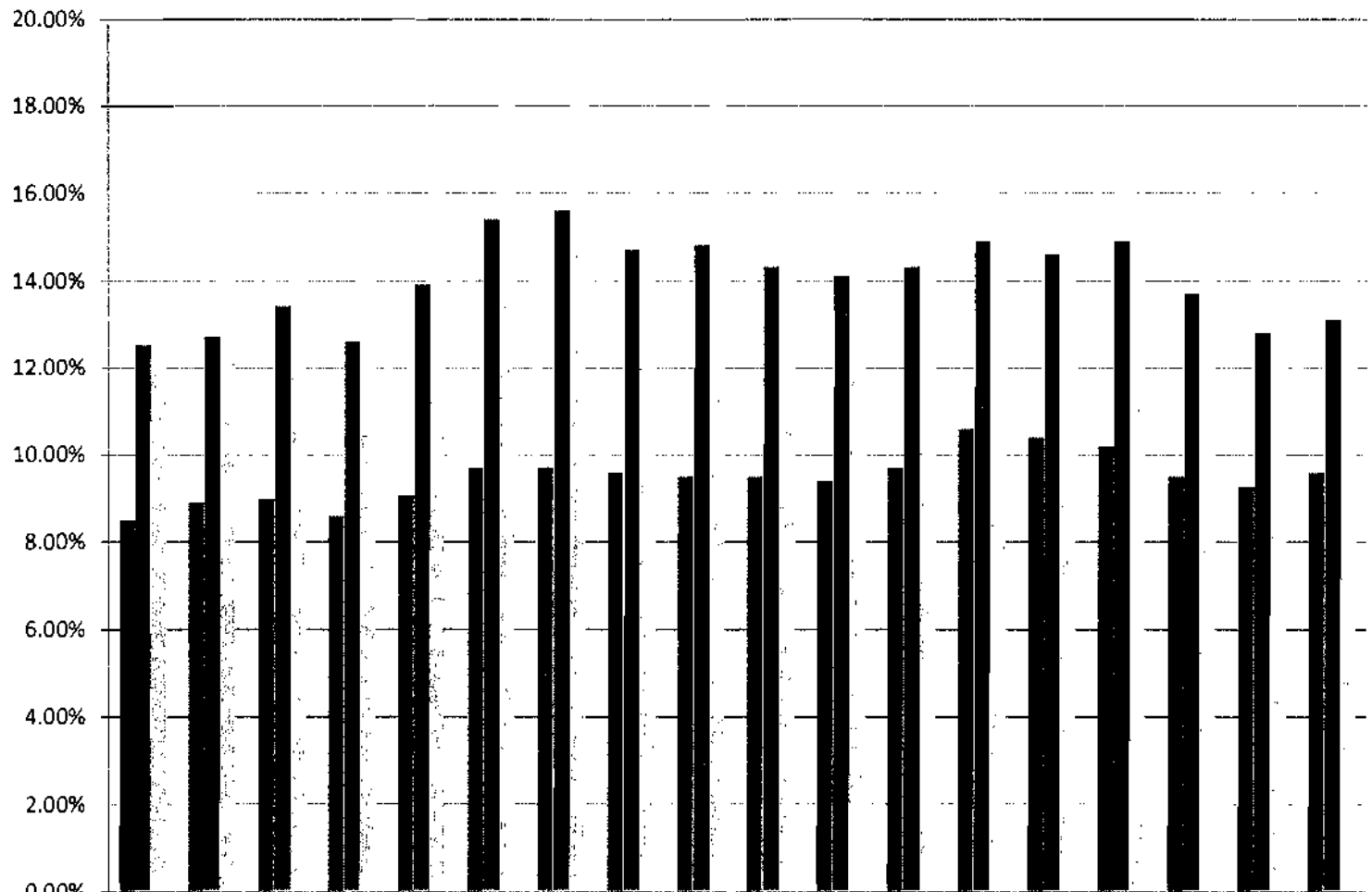
Macomb County Residents Employed



Macomb County

	Labor Market	Employed	Unemployed	Rate
July 2009	420,641	342,244	78,397	18.6%
June 2010	411,870	352,598	59,272	14.4%
Annual 1999	444,100	427,427	16,377	3.7%

2009/2010 Month-By-Month Unemployment Rate



	Jan	Feb	Mar	April	May	June	July	Aug	Sept	Oct	Nov	Dec	Jan-10	Feb-10	Mar-10	Apr-10	May-10	Jun-10
National Unemployment Rate	8.50%	8.90%	9%	8.60%	9.10%	9.70%	9.70%	9.60%	9.50%	9.50%	9.40%	9.70%	10.60	10.40	10.20	9.50%	9.30%	9.60%
Michigan Unemployment Rate	12.50	12.70	13.40	12.60	13.90	15.40	15.60	14.70	14.80	14.30	14.10	14.30	14.90	14.60	14.90	13.70	12.80	13.10
Macomb County Unemployment Rate	13.90	14.50	15%	14.40	16.10	18.40	18.60	18%	18.10	17.40	15.90	15.20	14.60	15.60	15.80	15.10	13.70	14.40

National Unemployment Rate
 Michigan Unemployment Rate
 Macomb County Unemployment Rate

UNEMPLOYMENT INFORMATION

	June 2009	June 2009 Unemployed	June 2010	June 2010 Unemployed
United States	9.7 %	15,095,000	9.6 %	14,885,000
Michigan	14.5 %	722,000	13.1 %	641,000
Macomb County	17.3 %	73,663	14.4 %	59,272
St. Clair County	18.4 %	15,485	15.0 %	12,141
Selected Cities				
Sterling Heights	13.6 %	9,105	11.2 %	7,326
St. Clair Shores	18.2 %	5,994	15.2 %	4,823
Clinton Township	19.2 %	10,432	16.0 %	8,394
Warren	19.9 %	14,367	16.6 %	11,560
Roseville	23.5 %	6,406	19.8 %	5,154
Port Huron	25.0 %	4,246	20.7 %	3,329